

**Paparangi School 2947**  
Effective XXX 2019

## **Enrolment Scheme**

The guidelines for development and operation of enrolment schemes are issued under section 11G (3) of the Education Act 1989 for the purpose of describing the basis on which the Secretary's powers in relation to enrolment schemes will be exercised.

### **Purpose and Principles**

- A. To avoid overcrowding or the likelihood of overcrowding at the school;
- B. To ensure that the selection of applicants for enrolment at the school is carried out in a fair and transparent manner; and
- C. To enable the Secretary to make best use of existing networks of State schools.

In achieving its purpose, an enrolment scheme must, as far as possible, ensure that:

- A. The scheme does not exclude local students; and
- B. No more students are excluded from the schools than is necessary to avoid overcrowding.

### **Home Zone**

**All students who live within the home zone described below shall be entitled to enrol at the school.**

#### **Northern boundary**

Havana Rise (including all streets off it).

#### **Western boundary**

The western boundary runs along the inside of the Johnsonville Porirua Motorway SH1 behind the suburb streets of Aruba Grove (including all streets off it), Grenada Drive, Mark Ave (including all streets off it) and Lynda Ave, to the intersection of Helston Road and Glen Alton Ave.

Cyril Way is in zone.

Glen Alton Ave is not in zone.

#### **Southern boundary**

From the intersection of Helston Road and Glen Alton Avenue, the boundary continues north along Helston Road. (East along Helston Road and Bracken Road) and to the intersection of Bracken Road with Beazley Ave (east). Streets to the north of this boundary are in zone including Warren Street and Jane Grove and all streets off Beazley Ave.

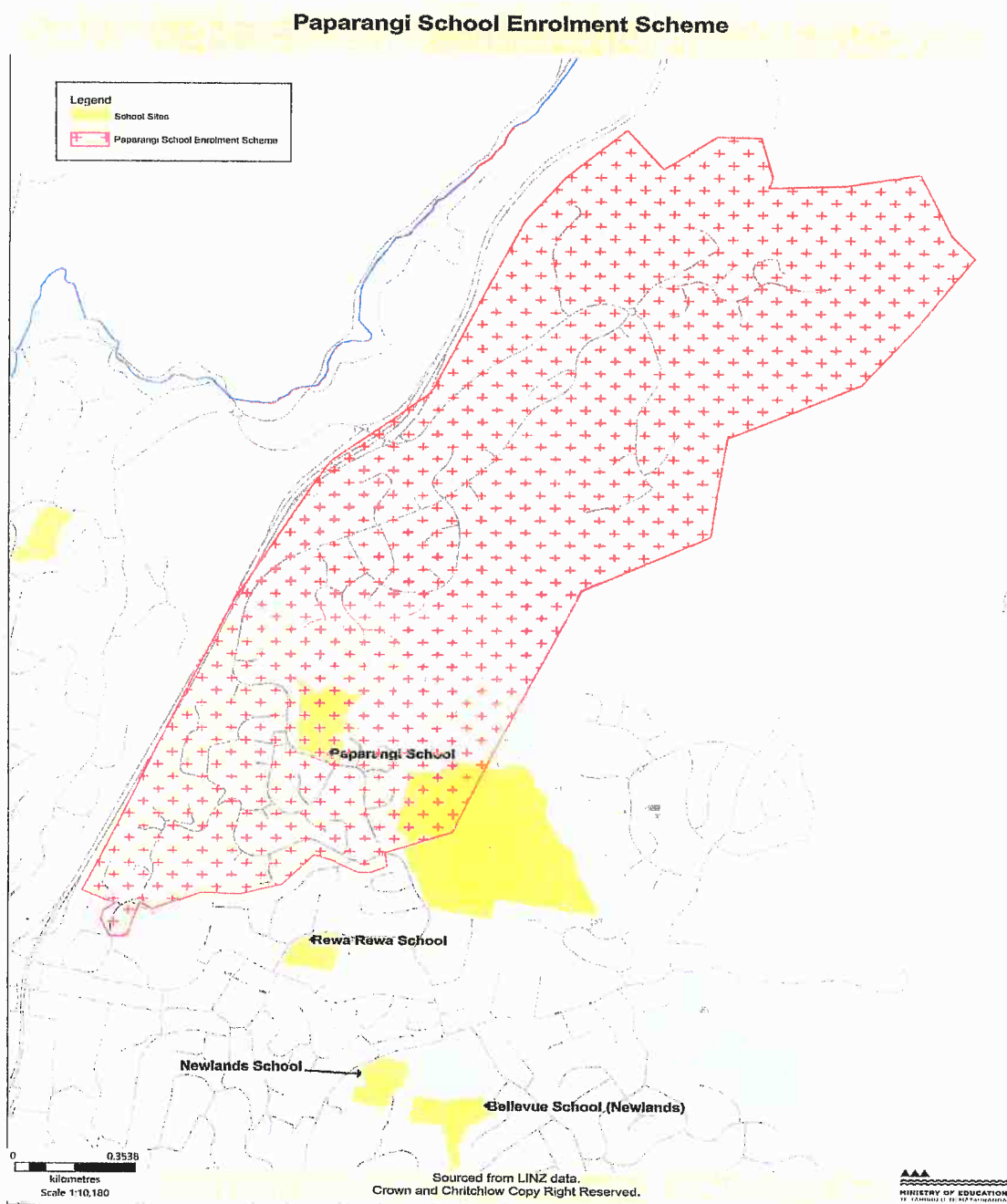
Helston Road addresses that are in zone include only 73 to 235 (odd numbers). This is at the corner of Glen Alton Ave and Helston Road; and 80A/B to 236 (even numbers) from the Helston Road Park Playground. Streets off Helston Road including Rokewa Way, Brydon Way, McMahon Way and Paparangi Cres are in zone.

Carluka Street and Hillview Cres are not in zone.

Bracken Street addresses that are in zone include only 92,94,96,98,100,102 (even) and 109,111,115,117,119 (odd).

#### **Eastern boundary**

The eastern boundary continues behind the suburb streets of Beazley Ave, Beverley Grove, Bushland Grove, Dominica Cres, Guadeloupe Cres (including all streets off it), Grenada Drive (including all streets off it), and back to Havana Rise.



Proof of residence of a property within the home zone will be required (for example a copy of a utility bill with the name of a parent or guardian and an address within the home zone, covering the date of enrolment or earlier). Where a property has two or more entrances on different streets, or where the actual address of a property is in dispute, only the rateable address as recognised by the local City Council will be considered to determine if the property is in or out of zone.

Each year, applications for enrolment in the following year from in-zone students will be sought by a date which will be published in a daily or community newspaper circulating in the area served by the school. This will enable the Board to assess the number of places which can be made available to students who live outside the home zone.

### Special Programmes

This priority category is not applicable at this school because the school does not run a Special programme approved by the Secretary.

### Out of Zone Enrolments

Each year the Board will determine the number of places which are likely to be available in the following year for the enrolment of students who live outside the home zone. The board will publish this information by notice in a daily or community newspaper circulating in the area served by the school and on the school website. The notice will indicate how applications are to be made and specify a date by which all applications must be received. The notice may indicate how many places are available.

***Applications for enrolment will be processed in the following order of priority:***

First Priority	This priority category is not applicable at this school because the school does not run a special programme approved by the Secretary.
Second Priority	Will be given to applicants who are siblings of current students.
Third Priority	Will be given to applicants who are siblings of former students.
Fourth priority	Will be given to applicants who are children of former students.
Fifth priority	Will be given to applicants who are either a child of an employee of the board of the school or a child of a member of the board of the school.
Sixth priority	Will be given to all other applicants.

If there are more applicants in the second, third, fourth, fifth or sixth priority groups than there are places available, selection within the priority group will be by a ballot conducted in accordance with instructions issued by the Secretary under Section 11G(1) of the Education Act 1989.

Parents will be informed of the date of any ballot by notice in a daily or community newspaper circulating in the area served by the school.

Applicants seeking second or third priority status may be required to give proof of a sibling relationship.